



Choice Bagging Equipment, LTD.

Bag Packaging Solutions to Fill Every Need

650 Series Gravity Auger Valve Bag Filler

Unit Description:

Gravity Auger Style Valve Bag Filler for Packaging 20-110# (9-50KG) Bags with Free Flowing Granular & Pelleted Products at Fill Rates of 1-6 Bags per Minute.

Examples of Proper Application Include:

- Fertilizer, Corn, Soybeans, Salt, Sugar
- Sand, Limestone, Refractory Materials, Plastic Pellets

Technical Specifications:

- Proper Application – Free Flowing Flakes & Granules
- Weight Range – 20-110 lb. (9-50KG) Valve Bags
- Fill rate – 1-6 Bags Per Minute (Depending on Product Characteristics & Bag Sizing)
- Typical Scale Weight Accuracy – +/- .5-1% of Target Weight (Depending on Product Characteristics & Bag Sizing)
- Process Air – 80 PSI @ 1 CFM / Bag Fill Cycle (Base Model Does Not Require Air)
- Electrical – 220 / 440 Volt / 3 PH / 60 Cycle



Principle Of Operation:

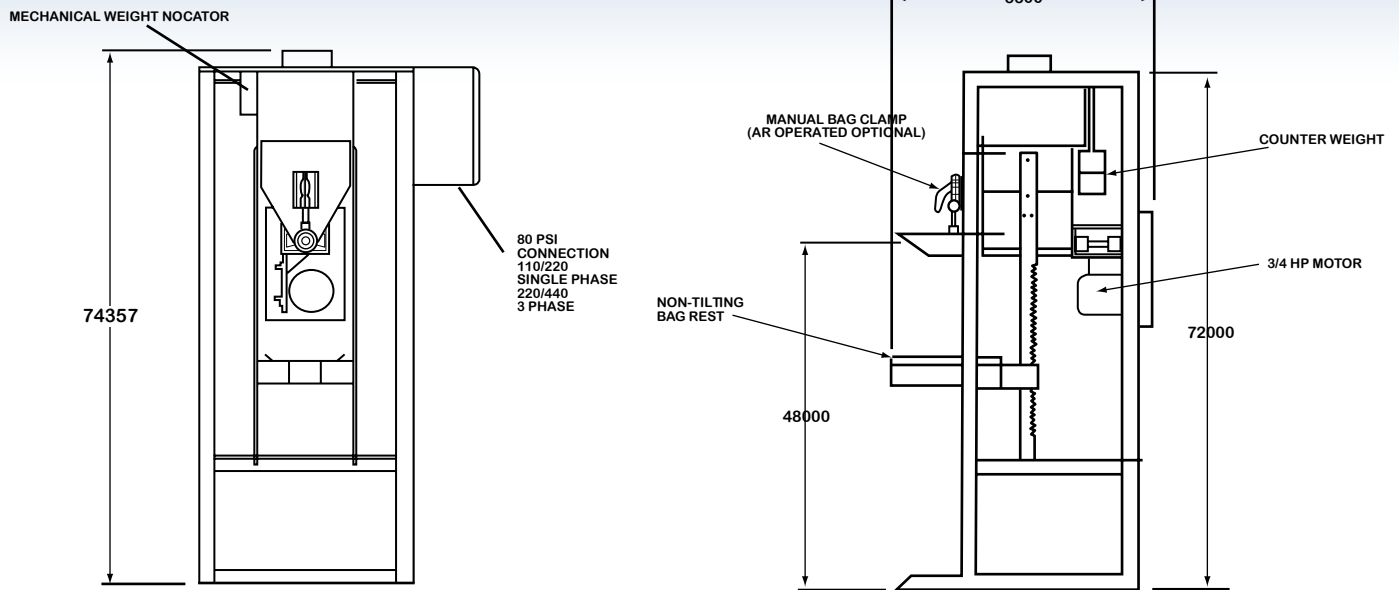
The 650 series gravity auger valve bag filler has a specially designed product flow gate powered by gravity. Product flows by gravity from the supply hopper bin into the product feed inlet at the top of the machine. When a fill cycle is initiated, the product flows through the gravity gate into an auger feeder that conveys it into the bag. No air is required for basic operation. The 650 series is an automatic mechanical scale gross weighing filler that simultaneously fills and weighs product directly into the bag.

Clean Operation:

The 650 series gravity auger packer has a totally enclosed product flow path from the supply hopper all the way into the bag. It can also be equipped with an optional dust collection manifold which can be ducted to your plant's dust suppression system.

Visit www.findtherightbagger.com or call 512.352.3694 for more info!

650 Series Gravity Auger Valve Bag Filler



STANDARD FEATURES

- Mild Steel Contacting Surfaces
- Mechanical Scale Weighing
- Bin Mounted Design
- Manual Pull Handle Start
- Automatic Stop
- Gate Style Material Cutoff
- Variable Flow Gate
- Manual Bag Clamp
- Adjustable Bag Rest
- 1.5 HP Drive Assembly
- 2.5" -3.5" Single Wall Fill Spout (Sized per Customer Requirements)

STANDARD OPTIONS

- 601-001 – Self Standing Frame (Req'd for All Electronic Scale Weighing Models)
- 603-200 – Air Operated Bag Clamp Assembly
- 606-200 – Vibratory Settling Bag Rest Assembly
- 608-200 – Pre-Fill Bag Inflator Assembly
- 610-000 – Digital Electronic Scale Weighing & "Bulk Only" Material Cutoff Gate
- 611-200 – Variable 2-Position "Bulk & Dribble" Cutoff
- 620-000 _ 304 S/S Material Contacting Surfaces
- 630-100 – Forklift Portable Tote Bin w/Self Standing Mounting Stand (M/S)

Good, Better, Best, Choice.

Visit www.findtherightbagger.com or call 512.352.3694 for more info!